

## **CC Report 10-12-12**

### **Year 1 Enrollment**

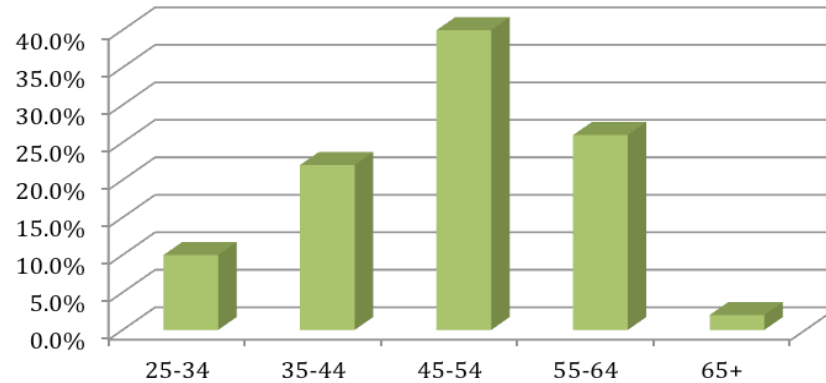
		CHL	BHN	Solider	Total
<b>Assessments &amp; Housing</b>	Baseline Assessment	11	25	13	49
	6 Month Assessment	10	8	8	26
	Discharge Assessment	0	0	0	0
	Housed	9	20	10	39
<b>Percentages</b>	% Enrolled to Annual Goal	110.0%	100.0%	130.0%	108.9%
	% Completed 6 Month (Eligible)	100.0%	80.0%	88.9%	89.7%
	% Discharged	0.0%	0.0%	0.0%	0.0%
	% Housed of Enrolled	81.8%	80.0%	76.9%	79.6%

### **Year 2 Enrollment**

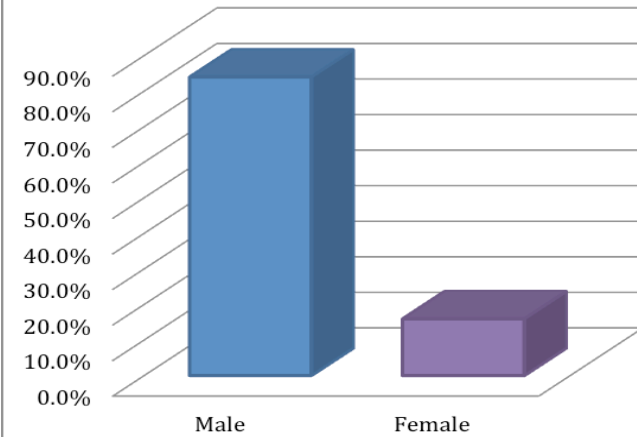
- Annual Goals: CHL (10); BHN (40); Soldier On (10)
- One Year 2 enrollment (Soldier On, housed 10/12)

## Demographic Profile (Year 1)

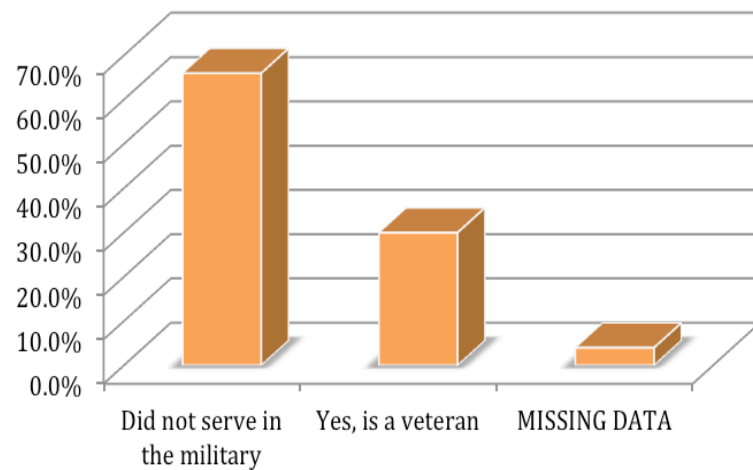
### Age group



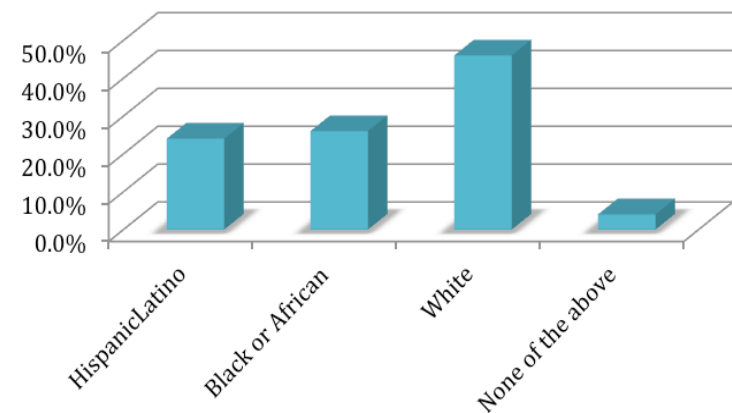
### Gender



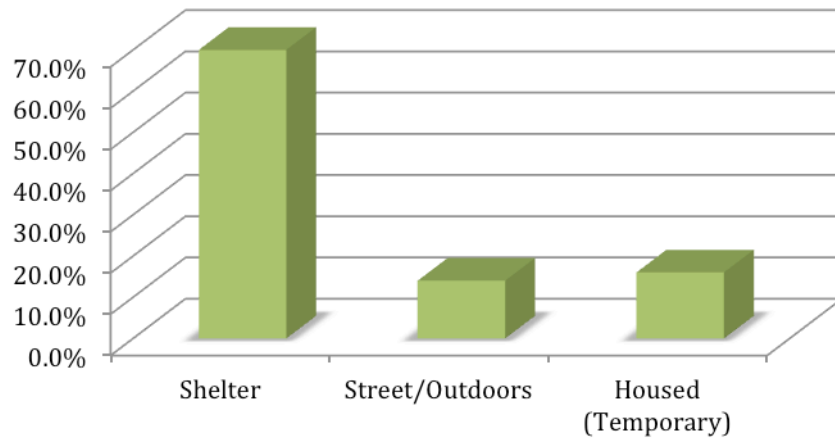
### Veteran



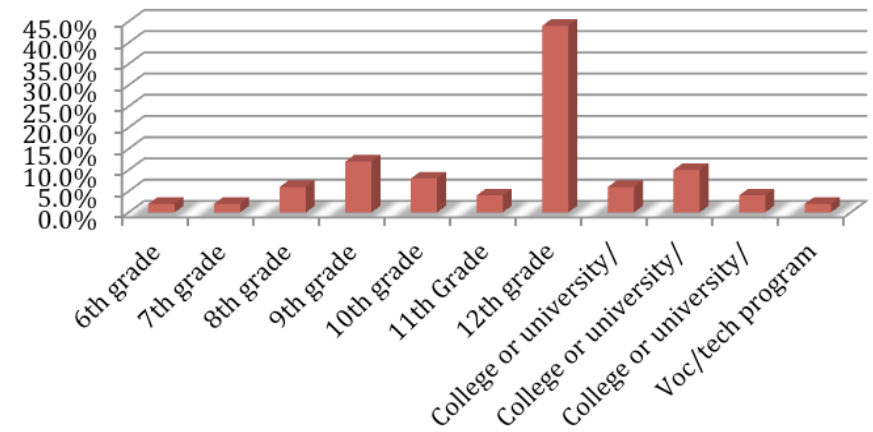
### Combined Race and Ethnicity



## Living

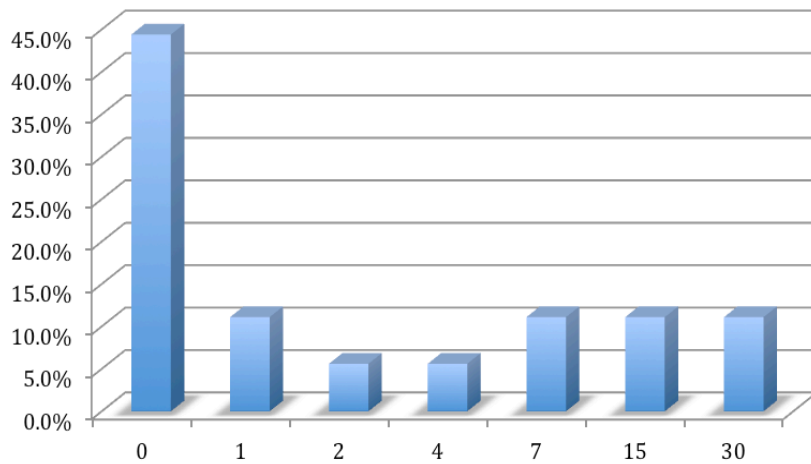


## Education

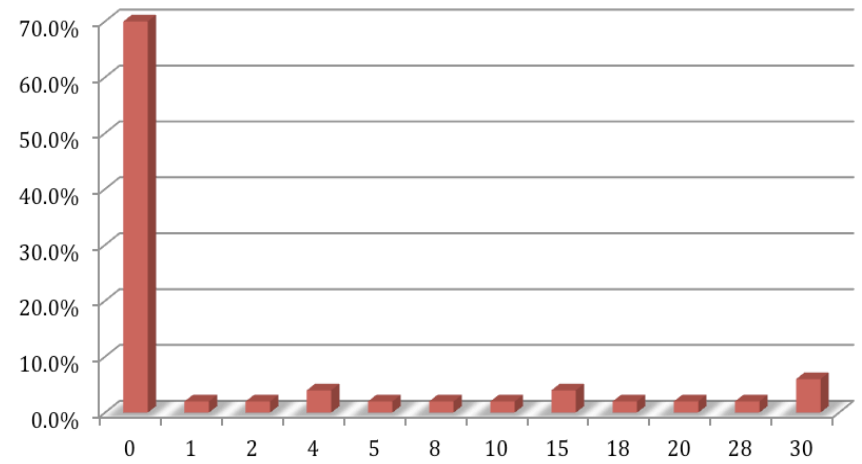


## Substance Use/Mental Health (Year 1)

### # of Days Alcohol to Intox. (Past 30 Days)



### #Days Used Illegal Drugs (Past 30 Days)



## Mental Health

### Average # Days (Past 30 Days)

