

Northampton TeenHousing

Vision: A two building complex in Northampton, MA providing supportive affordable housing for young adults 18-24 years old who are experiencing homelessness or are at risk of becoming homeless.



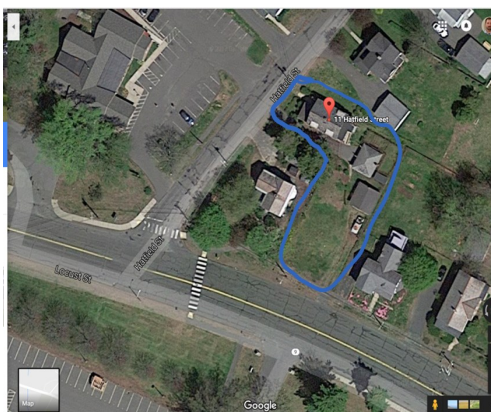
Project Summary: The Friends of Hampshire County Homeless Individuals in partnership with DIAL/SELF Youth & Community Services identified a need for supportive affordable housing in the greater Northampton area for unaccompanied youth 18-24 experiencing homelessness or who are at risk of becoming homeless to have supportive affordable housing. The Friends launched a fundraising campaign in January of 2016 to gather resources to acquire rehab and potentially construct 8-10 bedrooms worth of housing with the goal of turning the property over to DIAL/SELF to run programing similar to that which DIAL/SELF already operates in Franklin County.



After a year of fundraising and scouting properties, the two agencies found a property that appeared to meet all the many selection criteria required. On a bus line, centrally located, near the bike trail, healthcare, banking and schools. The plan is to renovate the existing structure to create two 2-bedroom apartments, and then build 4 enhanced single room occupancy efficiency apartments and program space on the empty lot. The project will take place in two phases. Phase 1 will be renovation of the existing structure so that 4 bedrooms become available by late summer of 2017. Phase 2 timing will be dependent on cost estimates and continued fundraising progress. The initial goal is to have the new building completed by Spring of 2018.



Property outline



Phase 2 new building concept sketch



Northampton Teen Housing Program & Operation

The apartments will be used for affordable supportive housing for youth 18-24 years of age who are experiencing homelessness or are at risk of becoming homeless. A preference will be given to applicants currently living in the greater Northampton area.

Youth will:

- Sign 3 month renewable leases
- Be responsible for rent based on their income and circumstances
- Engage in case management/supportive services
- Engage in at least 4 hours of community service per month



Greenfield house with 10 apartments

Frequently Asked Questions

Why is this project needed? Continuum of Care Homeless Information System data from the two winter shelters in Hampshire County, Interfaith (FHCHI) and Craig's Doors (Amherst) documents 54 homeless youth in 2014 and 39 in 2015. An additional 13 youth were served at Northampton's year-round shelter, Grove Street Inn in these two years. Northampton has approximately 25% of the 3-County Continuum of Care's homeless youth within its borders. The MA Department of Education documented 43 school aged youth who were homeless in Northampton for the 2014-2015 school year.

What type of supervision will there be? The buildings will use an electronic key access system and multiple web connected video cameras to monitor key areas of the property for the safety of all. Staff engage with tenants at regular intervals determined by the case management that varies based on the needs of each individual and on an as needed basis. DIAL/SELF has a 24/7 call line for program and property related emergencies. There is no live in staff person. Using the same model in Greenfield, at a building with 10 apartments, only 5 youth have been asked to leave the program for lease violations in the last 7 years.

Does this type of program really work? Yes. In 7 years at the Greenfield program over 80% of program exits were to independent permanent housing. Youth exiting have consistently built stronger community connections, achieved educational goals and maintained/attained solid employment. One young program participant returned after exiting the program to interview for a case manager position and is now a DIAL/SELF employee helping other young people navigate through their transition into adulthood.

DIAL/SELF

Started in 1977, DIAL/SELF is a community-based non-profit agency whose mission is to help young people become more independent by connecting them with housing, education, employment and civic engagement