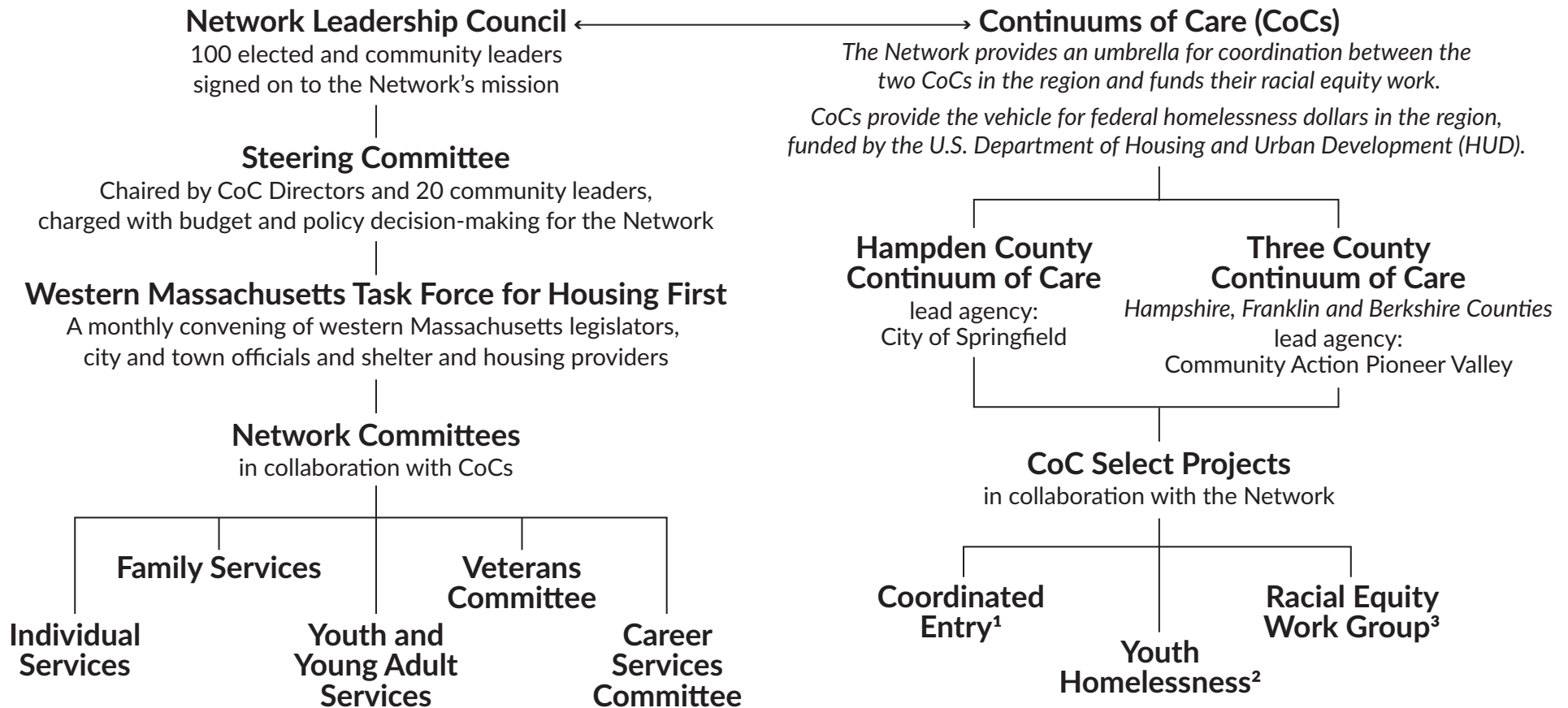


The mission: Western Massachusetts Network to End Homelessness creates collaborative solutions across Hampden, Hampshire, Franklin and Berkshire Counties to prevent and end homelessness through a Housing First approach that centers racial equity.



¹ Coordinated Entry is the implementation of a uniform assessment tool and "by-names" list for all people experiencing homelessness, ensuring the best possible allocation of housing resources.
² Youth Homelessness: Each CoC was awarded HUD funds for a Youth Homelessness Demonstration Project (YHDP) to prevent and end youth homelessness in Hampden County and Franklin County.
³ Each CoC is producing a racial equity work plan, funded by the Network to address the disproportionate impact of homelessness on people of color.